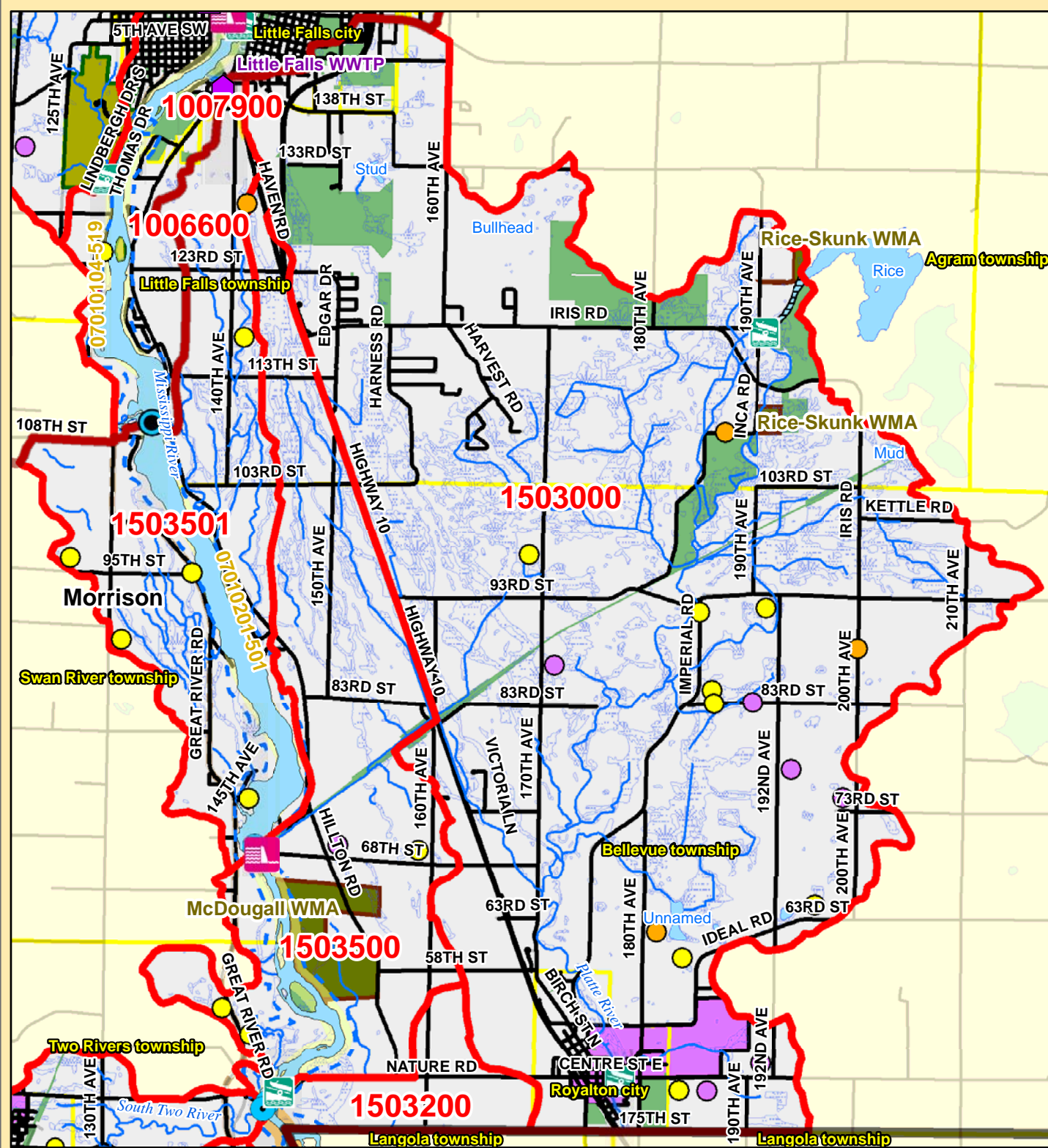


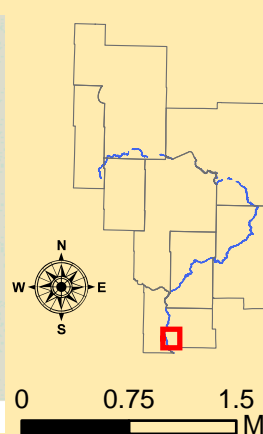
Mississippi River Catchment Map: South of Little Falls



Catchment #	1503000
River Stretch(es) (AUIDs)	N/A
Area (sq. miles)	41
Population 2010 (persons per sq. mile)	86
Population Change 2000 to 2010 (persons per sq. mile)	16
Surficial Geology	Outwash
Topography	Level
% Slope (avg.)	5
% Forested (private)	13
% Disturbed Land Cover	75
% Developed	7
# of Animal Units	5104
% Public Land	7
% Easements	1
% Lakes	0
% Mississippi River	0
% Wetlands (private)	21
% Protected	29
Risk Classification	Enhance
Implementation Priorities	
<i>Surface Water</i>	
Aquatic Invasive Species	x
Development (existing and potential)	x
Agricultural BMPs	x
Lake Focus:	
Lake Focus: Wild Rice	
Lake Focus: Shallow /Wildlife	x
Private Forest Stewardship	
Bluffs & Steep Slopes	
Bald Eagle Territory	
Critical Bird Habitat	x
Rare Native Plants / Communities	
Native Mussel Habitat	x
<i>Ground Water</i>	
Wellhead Protection	x

Catchment #	1503500
River Stretch(es) (AUIDs)	07010201-501
Area (sq. miles)	10
Population 2010 (persons per sq. mile)	18
Population Change 2000 to 2010 (persons per sq. mile)	-4
Surficial Geology	Outwash
Topography	Level
% Slope (avg.)	3
% Forested (private)	6
% Disturbed Land Cover	83
% Developed	6
# of Animal Units	456
% Public Land	9
% Easements	5
% Lakes	0
% Mississippi River	4
% Wetlands (private)	15
% Protected	32
Risk Classification	Enhance / Protection
Implementation Priorities	
<i>Surface Water</i>	
Aquatic Invasive Species	
Development (existing and potential)	
Agricultural BMPs	x
Lake Focus:	
Lake Focus: Wild Rice	
Lake Focus: Shallow /Wildlife	
Private Forest Stewardship	
Bluffs & Steep Slopes	
Bald Eagle Territory	x
Critical Bird Habitat	x
Rare Native Plants / Communities	
Native Mussel Habitat	x
<i>Ground Water</i>	
Wellhead Protection	

Catchment #	1503501
River Stretch(es) (AUIDs)	07010201-501
Area (sq. miles)	8
Population 2010 (persons per sq. mile)	50
Population Change 2000 to 2010 (persons per sq. mile)	4
Surficial Geology	Outwash
Topography	Level
% Slope (avg.)	4
% Forested (private)	7
% Disturbed Land Cover	76
% Developed	6
# of Animal Units	420
% Public Land	0
% Easements	2
% Lakes	0
% Mississippi River	13
% Wetlands (private)	12
% Protected	27
Risk Classification	Enhance
Implementation Priorities	
<i>Surface Water</i>	
Aquatic Invasive Species	x
Development (existing and potential)	x
Agricultural BMPs	x
Lake Focus:	
Lake Focus: Wild Rice	
Lake Focus: Shallow /Wildlife	
Private Forest Stewardship	
Bluffs & Steep Slopes	
Bald Eagle Territory	
Critical Bird Habitat	
Rare Native Plants / Communities	
Native Mussel Habitat	
<i>Ground Water</i>	
Wellhead Protection	



- Public Waterworks
- Water Use: Air Conditioning
- Water Use: Industrial Processing
- Irrigation: Crop
- Irrigation: Non Crop
- Water Use: Special Categories
- MPCA Permitted Sites
- Drinking Water Source Protection Areas
- Wellhead Protection Areas
- Dams
- Active Gravel Pits
- Water Access Sites
- Feedlots (by primary animal)**
- BIRDS
- BOVINES
- HORSES
- PIGS

- Wetlands (from NWI)
- Wild Rice
- Zebra Mussels
- Eurasian W. Milfoil, Faucet Snail, Zebra Mussels
- Lakes
- Zebra Mussels (Miss R.)
- Faucet Snail (Miss R.)
- Mississippi River
- Trout Streams
- Streams

- River Stretches (AUIDs) w/ Water Quality Data
- River Stretches (AUIDs) w/out Water Quality Data
- Outlet - Major Watershed
- Outlet - Catchment
- Catchments (DNR Level 8)
- Major Watersheds
- Conservation Easements
- Public Lands
- Cities / Townships
- County Boundaries

- Roads
- Proposed Mississippi River Trail (MRT) Route
- Taconite State Trail
- Paul Bunyan State Trail
- Heartland State Trail
- State Park Boundaries
- State Recreation Area Boundaries
- Scientific and Natural Areas
- Wildlife Management Areas
- Mississippi Headwaters Board (MHB) - Corridor