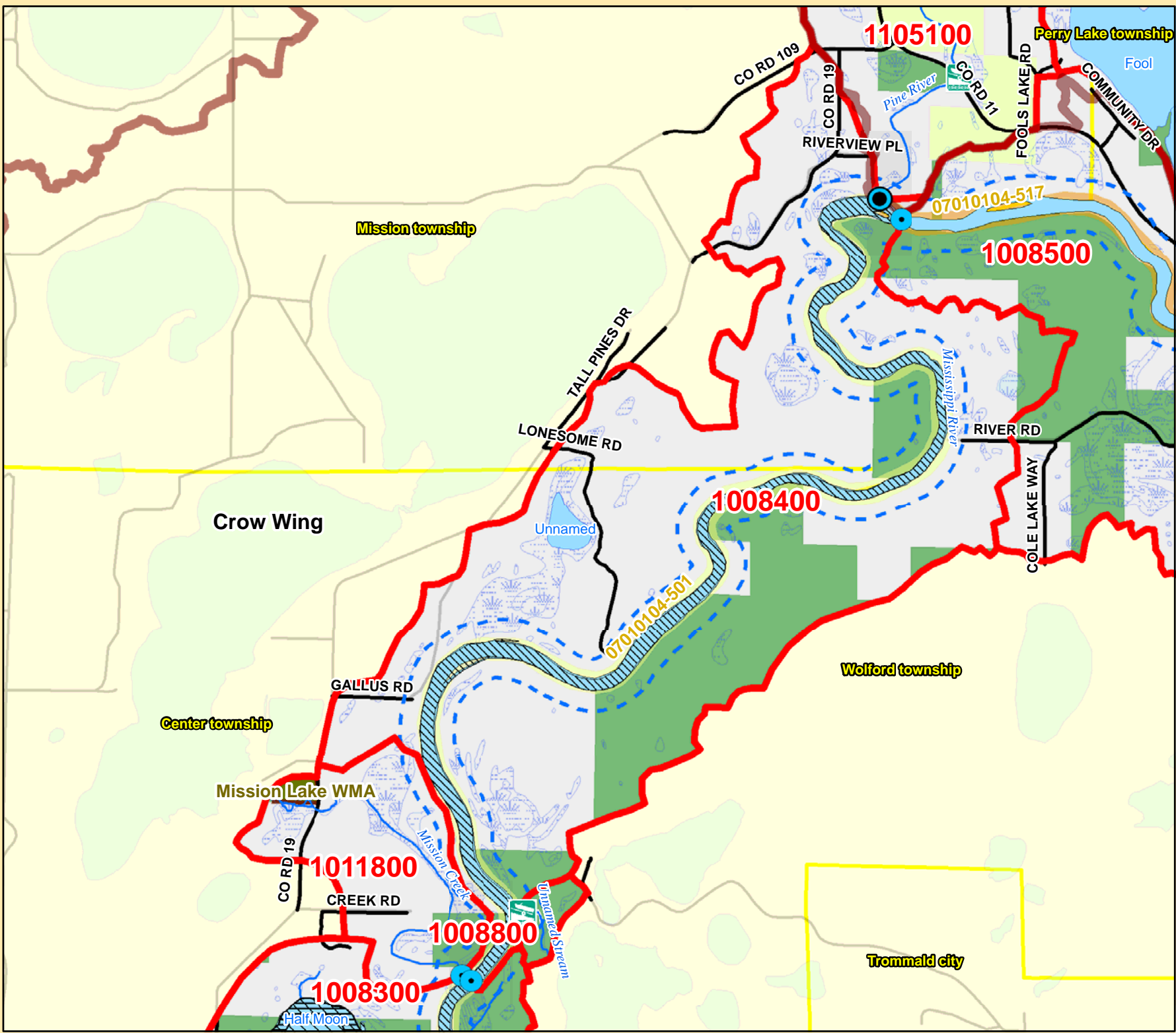


Mississippi R. Catchment Map: South of Pine River Confluence

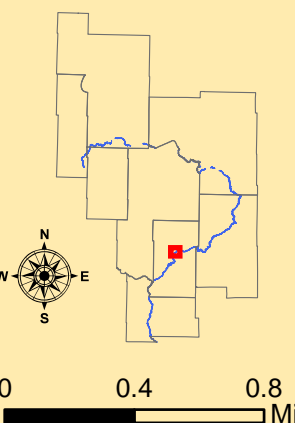


Catchment #	1008400
River Stretch(es) (AUIDs)	07010104-501
Area (sq. miles)	5
Population 2010 (persons per sq. mile)	11
Population Change 2000 to 2010 (persons per sq. mile)	-3
Surficial Geology	Outwash
Topography	Rolling to Undulating
% Slope (avg.)	13
% Forested (private)	52
% Disturbed Land Cover	4
% Developed	1
# of Animal Units	0
% Public Land	21
% Easements	0
% Lakes	1
% Mississippi River	8
% Wetlands (private)	8
% Protected	38
Risk Classification	Enhance/Protection

Catchment #	1011800
River Stretch(es) (AUIDs)	07010104-501
Area (sq. miles)	1
Population 2010 (persons per sq. mile)	23
Population Change 2000 to 2010 (persons per sq. mile)	8
Surficial Geology	Outwash
Topography	Steep
% Slope (avg.)	6
% Forested (private)	27
% Disturbed Land Cover	37
% Developed	2
# of Animal Units	0
% Public Land	12
% Easements	0
% Lakes	0
% Mississippi River	0
% Wetlands (private)	19
% Protected	31
Risk Classification	Enhance / Protection

Implementation Priorities	
<i>Surface Water</i>	
Aquatic Invasive Species	x
Development (existing and potential)	
Agricultural BMPs	
Lake Focus:	
Lake Focus: Wild Rice	
Lake Focus: Shallow /Wildlife	
Private Forest Stewardship	x
Bluffs & Steep Slopes	x
Bald Eagle Territory	x
Critical Bird Habitat	
Rare Native Plants / Communities	
Native Mussel Habitat	x
<i>Ground Water</i>	
Wellhead Protection	

Implementation Priorities	
<i>Surface Water</i>	
Aquatic Invasive Species	
Development (existing and potential)	x
Agricultural BMPs	
Lake Focus:	
Lake Focus: Wild Rice	
Lake Focus: Shallow /Wildlife	
Private Forest Stewardship	x
Bluffs & Steep Slopes	
Bald Eagle Territory	
Critical Bird Habitat	
Rare Native Plants / Communities	
Native Mussel Habitat	
<i>Ground Water</i>	
Wellhead Protection	



- Ⓜ Public Waterworks
- ★ Water Use: Air Conditioning
- Water Use: Industrial Processing
- ⊕ Irrigation: Crop
- Irrigation: Non Crop
- ⬠ Water Use: Special Categories
- ⬠ MPCA Permitted Sites
- ⬠ Drinking Water Source Protection Areas
- ⬠ Wellhead Protection Areas

- 🏰 Dams
- ⚡ Active Gravel Pits
- 🌿 Water Access Sites
- Feedlots (by primary animal)**
- 🐔 BIRDS
- 🐮 BOVINES
- 🐎 HORSES
- 🐷 PIGS

- 🌊 Wetlands (from NWI)
- 🌾 Wild Rice
- 🌾 Zebra Mussels
- 🌾 Eurasian W. Milfoil, Faucet Snail, Zebra Mussels
- 🌊 Lakes
- 🌊 Zebra Mussels (Miss R.)
- 🌊 Faucel Snail (Miss R.)
- 🌊 Mississippi River
- 🐟 Trout Streams
- 🌊 Streams

- 📍 River Stretches (AUIDs) w/ Water Quality Data
- 📍 River Stretches (AUIDs) w/out Water Quality Data
- 📍 Outlet - Major Watershed
- 📍 Outlet - Catchment
- 📍 Catchments (DNR Level 8)
- 📍 Major Watersheds
- 📍 Conservation Easements
- 📍 Public Lands
- 📍 Cities / Townships
- 📍 County Boundaries
- 📍 Roads
- 📍 Proposed Mississippi River Trail (MRT) Route
- 📍 Taconite State Trail
- 📍 Paul Bunyan State Trail
- 📍 Heartland State Trail
- 📍 State Park Boundaries
- 📍 State Recreation Area Boundaries
- 📍 Scientific and Natural Areas
- 📍 Wildlife Management Areas
- 📍 Mississippi Headwaters Board (MHB) - Corridor