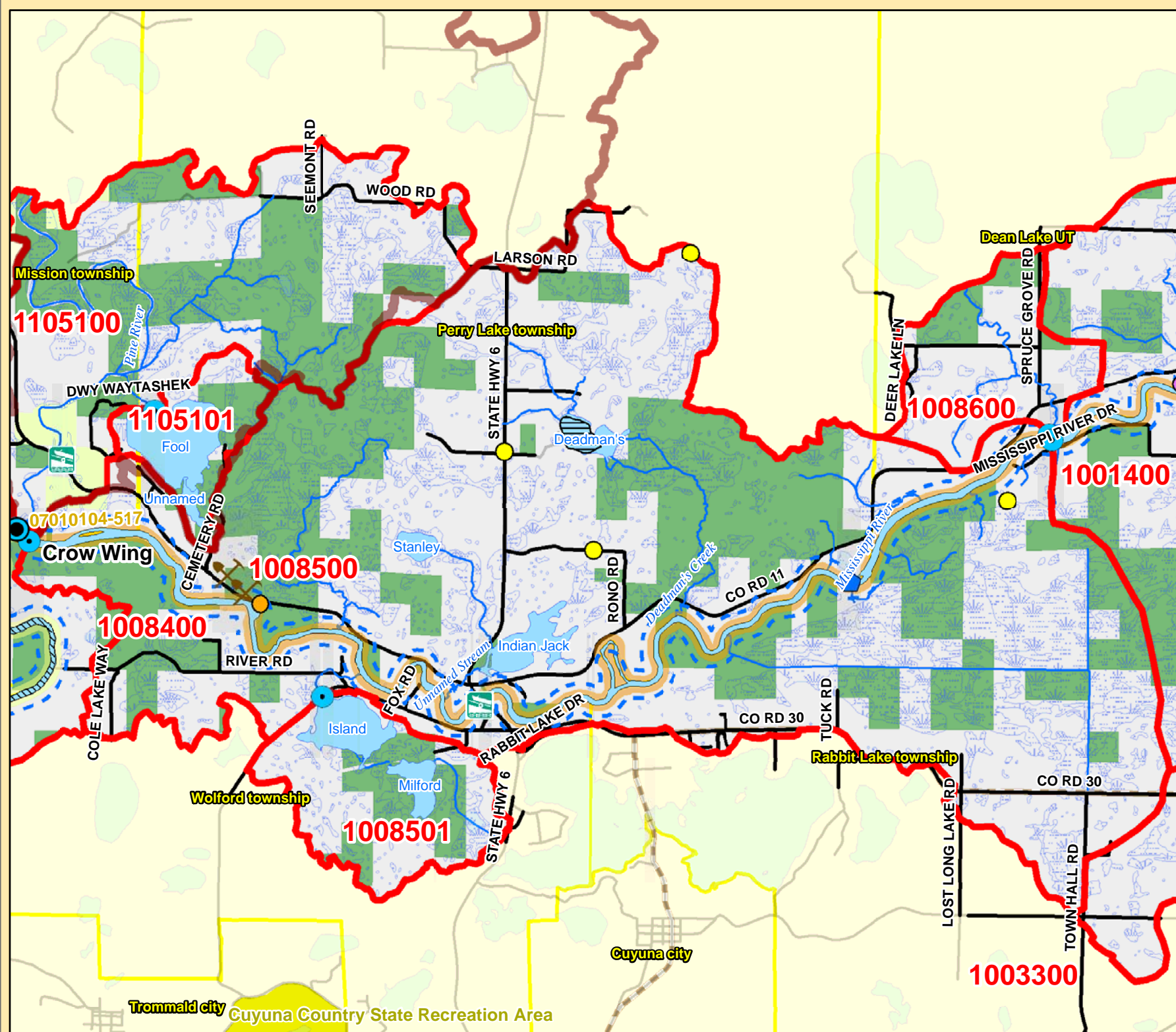


Mississippi R. Catchment Map: Highway 6 / County Rd 11



Catchment #	1008500
River Stretch(es) (AUIDs)	07010104-517
Area (sq. miles)	25
Population 2010 (persons per sq. mile)	13
Population Change 2000 to 2010 (persons per sq. mile)	1
Surficial Geology	Supraglacial Drift Complex
Topography	Steep
% Slope (avg.)	8
% Forested (private)	28
% Disturbed Land Cover	14
% Developed	3
# of Animal Units	880
% Public Land	41
% Easements	0
% Lakes	1
% Mississippi River	2
% Wetlands (private)	18
% Protected	63
Risk Classification	Protection

Catchment #	1008501
River Stretch(es) (AUIDs)	N/A
Area (sq. miles)	2
Population 2010 (persons per sq. mile)	13
Population Change 2000 to 2010 (persons per sq. mile)	2
Surficial Geology	Supraglacial Drift Complex
Topography	Steep
% Slope (avg.)	16
% Forested (private)	43
% Disturbed Land Cover	2
% Developed	2
# of Animal Units	0
% Public Land	100
% Easements	0
% Lakes	16
% Mississippi River	0
% Wetlands (private)	12
% Protected	100
Risk Classification	Vigilance

Implementation Priorities	
<i>Surface Water</i>	
Aquatic Invasive Species	
Development (existing and potential)	
Agricultural BMPs	x
Lake Focus:	
Lake Focus: Wild Rice	x
Lake Focus: Shallow /Wildlife	x
Private Forest Stewardship	x
Bluffs & Steep Slopes	
Bald Eagle Territory	x
Critical Bird Habitat	x
Rare Native Plants / Communities	x
Native Mussel Habitat	
<i>Ground Water</i>	
Wellhead Protection	

Implementation Priorities	
<i>Surface Water</i>	
Aquatic Invasive Species	
Development (existing and potential)	
Agricultural BMPs	
Lake Focus:	x
Lake Focus: Wild Rice	
Lake Focus: Shallow /Wildlife	x
Private Forest Stewardship	x
Bluffs & Steep Slopes	x
Bald Eagle Territory	
Critical Bird Habitat	
Rare Native Plants / Communities	x
Native Mussel Habitat	
<i>Ground Water</i>	
Wellhead Protection	

<ul style="list-style-type: none"> Public Waterworks Water Use: Air Conditioning Water Use: Industrial Processing Irrigation: Crop Irrigation: Non Crop Water Use: Special Categories MPCA Permitted Sites Drinking Water Source Protection Areas Wellhead Protection Areas 	<ul style="list-style-type: none"> Dams Active Gravel Pits Water Access Sites <p>Feedlots (by primary animal)</p> <ul style="list-style-type: none"> BIRDS BOVINES HORSES PIGS 	<ul style="list-style-type: none"> Wetlands (from NWI) Wild Rice Zebra Mussels Eurasian W. Milfoil, Faucet Snail, Zebra Mussels Lakes Zebra Mussels (Miss R.) Faucet Snail (Miss R.) Mississippi River Trout Streams Streams 	<ul style="list-style-type: none"> River Stretches (AUIDs) w/ Water Quality Data River Stretches (AUIDs) w/out Water Quality Data Outlet - Major Watershed Outlet - Catchment Catchments (DNR Level 8) Major Watersheds Conservation Easements Public Lands Cities / Townships County Boundaries 	<ul style="list-style-type: none"> Roads Proposed Mississippi River Trail (MRT) Route Taconite State Trail Paul Bunyan State Trail Heartland State Trail State Park Boundaries State Recreation Area Boundaries Scientific and Natural Areas Wildlife Management Areas Mississippi Headwaters Board (MHB) - Corridor
---	---	--	--	--