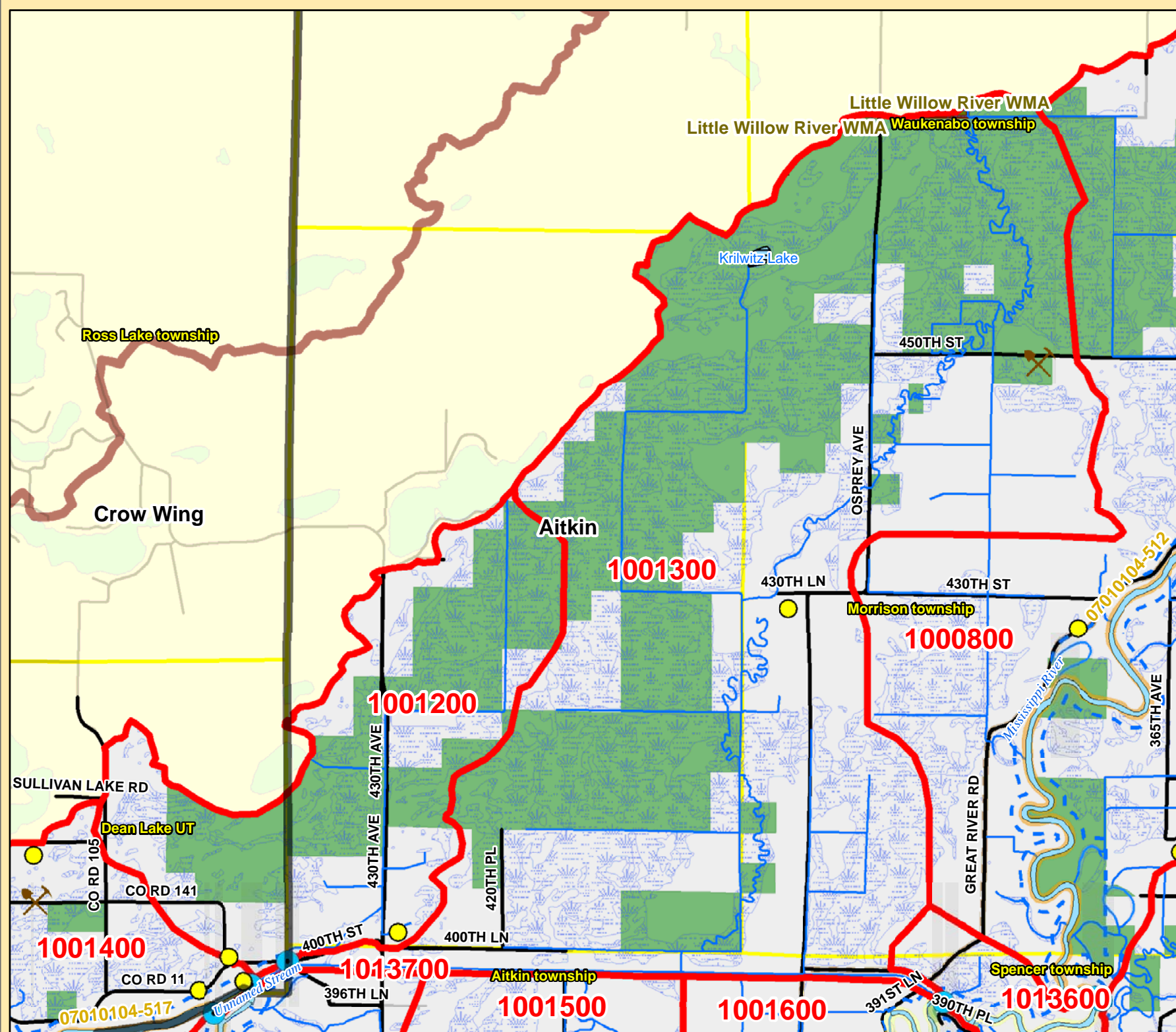
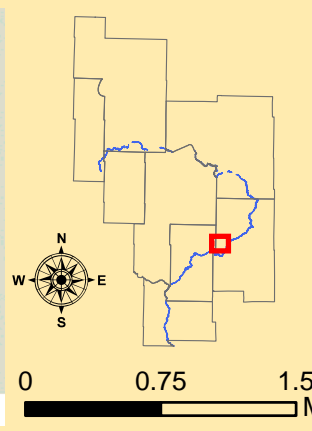


Mississippi R. Catchment Map: Diversion Channel (Aitkin / CWC)



Catchment #	1001200
River Stretch(es) (AUIDs)	N/A
Area (sq. miles)	7
Population 2010 (persons per sq. mile)	3
Population Change 2000 to 2010 (persons per sq. mile)	-1
Surficial Geology	Peat
Topography	Level
% Slope (avg.)	2
% Forested (private)	11
% Disturbed Land Cover	24
% Developed	2
# of Animal Units	361
% Public Land	50
% Easements	0
% Lakes	0
% Mississippi River	0
% Wetlands (private)	16
% Protected	66
Risk Classification	Protection
Implementation Priorities	
<i>Surface Water</i>	
Aquatic Invasive Species	
Development (existing and potential)	
Agricultural BMPs	x
Lake Focus:	
Lake Focus: Wild Rice	
Lake Focus: Shallow /Wildlife	
Private Forest Stewardship	
Bluffs & Steep Slopes	
Bald Eagle Territory	
Critical Bird Habitat	
Rare Native Plants / Communities	
Native Mussel Habitat	
<i>Ground Water</i>	
Wellhead Protection	

Catchment #	1001300
River Stretch(es) (AUIDs)	N/A
Area (sq. miles)	26
Population 2010 (persons per sq. mile)	2
Population Change 2000 to 2010 (persons per sq. mile)	0
Surficial Geology	Peat
Topography	Level
% Slope (avg.)	1
% Forested (private)	4
% Disturbed Land Cover	36
% Developed	1
# of Animal Units	38
% Public Land	50
% Easements	0
% Lakes	0
% Mississippi River	0
% Wetlands (private)	20
% Protected	70
Risk Classification	Protection
Implementation Priorities	
<i>Surface Water</i>	
Aquatic Invasive Species	
Development (existing and potential)	
Agricultural BMPs	x
Lake Focus:	
Lake Focus: Wild Rice	x
Lake Focus: Shallow /Wildlife	
Private Forest Stewardship	
Bluffs & Steep Slopes	
Bald Eagle Territory	
Critical Bird Habitat	x
Rare Native Plants / Communities	
Native Mussel Habitat	
<i>Ground Water</i>	
Wellhead Protection	



- (W) Public Waterworks
- ★ Water Use: Air Conditioning
- Water Use: Industrial Processing
- ⊕ Irrigation: Crop
- Irrigation: Non Crop
- ⬠ Water Use: Special Categories
- ⬠ MPCA Permitted Sites
- ⬠ Drinking Water Source Protection Areas
- ⬠ Wellhead Protection Areas

- 🏰 Dams
- ⚡ Active Gravel Pits
- 🌿 Water Access Sites
- Feedlots (by primary animal)**
- 🐔 BIRDS
- 🐮 BOVINES
- 🐎 HORSES
- 🐷 PIGS

- 🌿 Wetlands (from NWI)
- 🌾 Wild Rice
- 🐛 Zebra Mussels
- 🐛 Eurasian W. Milfoil, Faucet Snail, Zebra Mussels
- 🌊 Lakes
- 🐛 Zebra Mussels (Miss R.)
- 🐛 Faucel Snail (Miss R.)
- 🌊 Mississippi River
- 🐟 Trout Streams
- 🌊 Streams

- 🟡 River Stretches (AUIDs) w/ Water Quality Data
- 🟠 River Stretches (AUIDs) w/out Water Quality Data
- 🟦 Outlet - Major Watershed
- 🟦 Outlet - Catchment
- 🔴 Catchments (DNR Level 8)
- 🔴 Major Watersheds
- 🟡 Conservation Easements
- 🟢 Public Lands
- 🟡 Cities / Townships
- 🟩 County Boundaries

- 🛣️ Roads
- 🛤️ Proposed Mississippi River Trail (MRT) Route
- 🛤️ Taconite State Trail
- 🛤️ Paul Bunyan State Trail
- 🛤️ Heartland State Trail
- 🟢 State Park Boundaries
- 🟡 State Recreation Area Boundaries
- 🟢 Scientific and Natural Areas
- 🟢 Wildlife Management Areas
- 🔵 Mississippi Headwaters Board (MHB) - Corridor