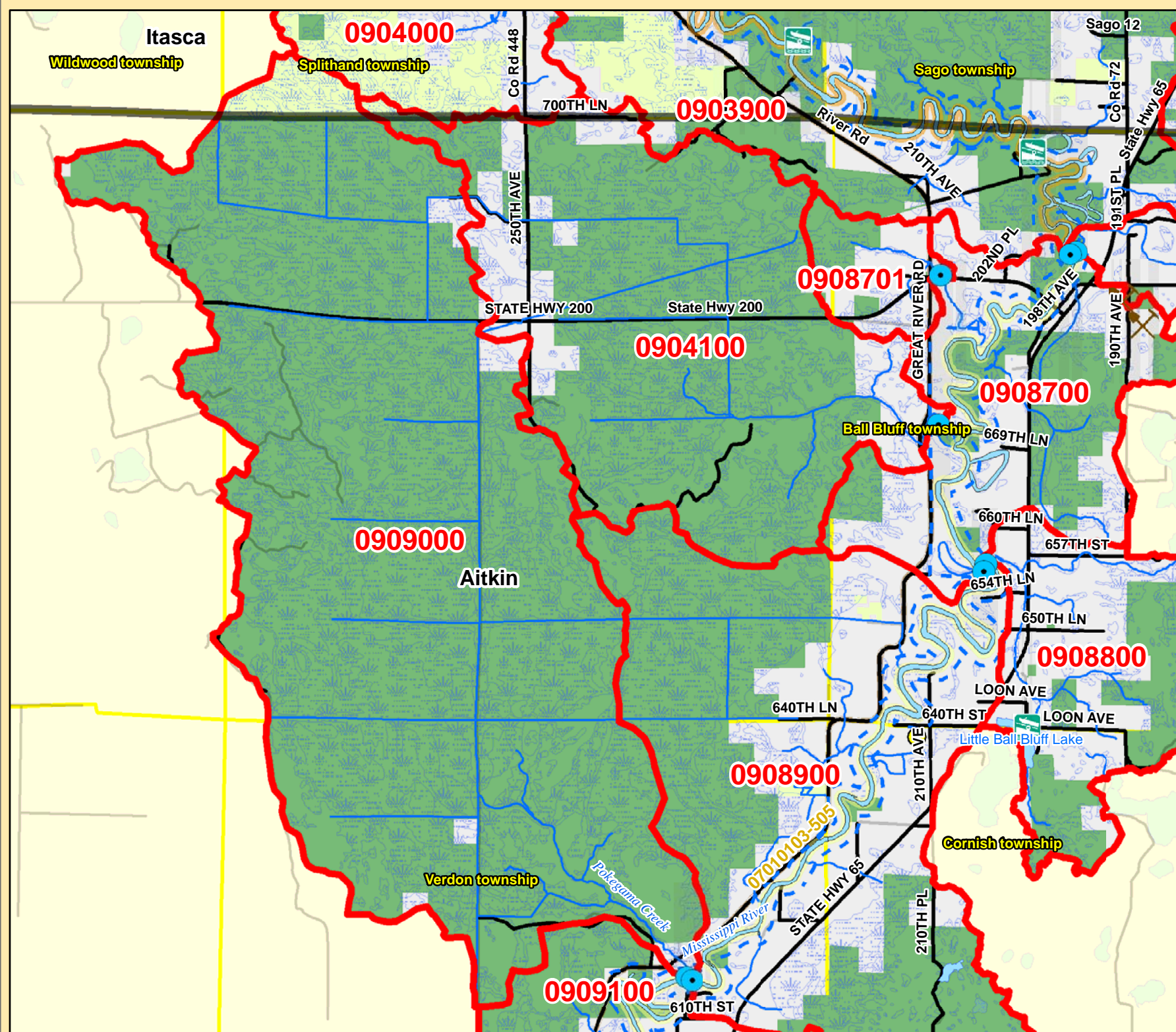
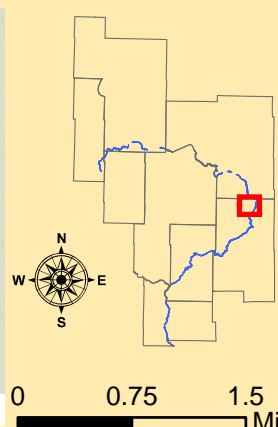


# Mississippi River Catchment Map: Hwy 200 (North Aitkin Co)



Catchment #	0904100
River Stretch(es) (AUIDs)	N/A
Area (sq. miles)	14
Population 2010 (persons per sq. mile)	2
Population Change 2000 to 2010 (persons per sq. mile)	1
Surficial Geology	Peat
Topography	Level
% Slope (avg.)	3
% Forested (private)	7
% Disturbed Land Cover	5
% Developed	2
# of Animal Units	0
% Public Land	82
% Easements	1
% Lakes	0
% Mississippi River	0
% Wetlands (private)	5
% Protected	<b>88</b>
<b>Risk Classification</b>	<b>Vigilance</b>
<b>Implementation Priorities</b>	
<i>Surface Water</i>	
Aquatic Invasive Species	
Development (existing and potential)	
Agricultural BMPs	
Lake Focus:	
Lake Focus: Wild Rice	
Lake Focus: Shallow /Wildlife	
Private Forest Stewardship	
Bluffs & Steep Slopes	
Bald Eagle Territory	
Critical Bird Habitat	
Rare Native Plants / Communities	
Native Mussel Habitat	
<i>Ground Water</i>	
Wellhead Protection	

Catchment #	0909000
River Stretch(es) (AUIDs)	N/A
Area (sq. miles)	29
Population 2010 (persons per sq. mile)	0
Population Change 2000 to 2010 (persons per sq. mile)	0
Surficial Geology	Peat
Topography	Level
% Slope (avg.)	2
% Forested (private)	1
% Disturbed Land Cover	2
% Developed	1
# of Animal Units	0
% Public Land	96
% Easements	2
% Lakes	0
% Mississippi River	0
% Wetlands (private)	3
% Protected	<b>100</b>
<b>Risk Classification</b>	<b>Vigilance</b>
<b>Implementation Priorities</b>	
<i>Surface Water</i>	
Aquatic Invasive Species	
Development (existing and potential)	
Agricultural BMPs	
Lake Focus:	
Lake Focus: Wild Rice	
Lake Focus: Shallow /Wildlife	
Private Forest Stewardship	
Bluffs & Steep Slopes	
Bald Eagle Territory	
Critical Bird Habitat	
Rare Native Plants / Communities	x
Native Mussel Habitat	
<i>Ground Water</i>	
Wellhead Protection	



- (W) Public Waterworks
- ★ Water Use: Air Conditioning
- Water Use: Industrial Processing
- ⊕ Irrigation: Crop
- Irrigation: Non Crop
- ⬠ Water Use: Special Categories
- ⬠ MPCA Permitted Sites
- ⬠ Drinking Water Source Protection Areas
- ⬠ Wellhead Protection Areas

- Dams
- Active Gravel Pits
- Water Access Sites
- Feedlots (by primary animal)**
- BIRDS
- BOVINES
- HORSES
- PIGS

- Wetlands (from NWI)
- Wild Rice
- Zebra Mussels
- Eurasian W. Milfoil, Faucet Snail, Zebra Mussels
- Lakes
- Zebra Mussels (Miss R.)
- Faucel Snail (Miss R.)
- Mississippi River
- Trout Streams
- Streams

- River Stretches (AUIDs) w/ Water Quality Data
- River Stretches (AUIDs) w/out Water Quality Data
- Outlet - Major Watershed
- Outlet - Catchment
- Catchments (DNR Level 8)
- Major Watersheds
- Conservation Easements
- Public Lands
- Cities / Townships
- County Boundaries
- Roads
- Proposed Mississippi River Trail (MRT) Route
- Taconite State Trail
- Paul Bunyan State Trail
- Heartland State Trail
- State Park Boundaries
- State Recreation Area Boundaries
- Scientific and Natural Areas
- Wildlife Management Areas
- Mississippi Headwaters Board (MHB) - Corridor