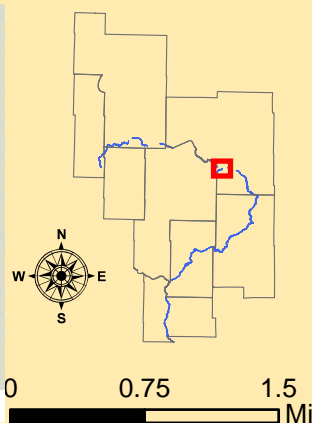


### Mississippi River Catchment Map: Blackwater Lake

<b>Catchment #</b>	<b>0700604</b>
<b>River Stretch(es) (AUIDs)</b>	07010101-646
<b>Area (sq. miles)</b>	17
<b>Population 2010</b> (persons per sq. mile)	17
<b>Population Change 2000 to 2010</b> (persons per sq. mile)	3
<b>Surficial Geology</b>	Outwash
<b>Topography</b>	Level
<b>% Slope (avg.)</b>	4
<b>% Forested (private)</b>	18
<b>% Disturbed Land Cover</b>	24
<b>% Developed</b>	4
<b># of Animal Units</b>	33
<b>% Public Land</b>	24
<b>% Easements</b>	0
<b>% Lakes</b>	8
<b>% Mississippi River</b>	0
<b>% Wetlands (private)</b>	17
<b>% Protected</b>	<b>49</b>
<b>Risk Classification</b>	<b>Protection</b>
<b>Implementation Priorities</b>	
<i>Surface Water</i>	
Aquatic Invasive Species	x
Development (existing and potential)	
Agricultural BMPs	x
Lake Focus:	x
Lake Focus: Wild Rice	x
Lake Focus: Shallow /Wildlife	x
Private Forest Stewardship	
Bluffs & Steep Slopes	
Bald Eagle Territory	x
Critical Bird Habitat	
Rare Native Plants / Communities	x
Native Mussel Habitat	
<i>Ground Water</i>	
Wellhead Protection	x

<b>Catchment #</b>	<b>0700700</b>
<b>River Stretch(es) (AUIDs)</b>	07010101-501
<b>Area (sq. miles)</b>	10
<b>Population 2010</b> (persons per sq. mile)	19
<b>Population Change 2000 to 2010</b> (persons per sq. mile)	1
<b>Surficial Geology</b>	Outwash
<b>Topography</b>	Level
<b>% Slope (avg.)</b>	4
<b>% Forested (private)</b>	19
<b>% Disturbed Land Cover</b>	37
<b>% Developed</b>	5
<b># of Animal Units</b>	56
<b>% Public Land</b>	17
<b>% Easements</b>	0
<b>% Lakes</b>	0
<b>% Mississippi River</b>	3
<b>% Wetlands (private)</b>	17
<b>% Protected</b>	<b>37</b>
<b>Risk Classification</b>	<b>Enhance / Protection</b>
<b>Implementation Priorities</b>	
<i>Surface Water</i>	
Aquatic Invasive Species	
Development (existing and potential)	
Agricultural BMPs	x
Lake Focus:	
Lake Focus: Wild Rice	
Lake Focus: Shallow /Wildlife	
Private Forest Stewardship	
Bluffs & Steep Slopes	
Bald Eagle Territory	x
Critical Bird Habitat	
Rare Native Plants / Communities	x
Native Mussel Habitat	
<i>Ground Water</i>	
Wellhead Protection	



- (W) Public Waterworks
- ★ Water Use: Air Conditioning
- Water Use: Industrial Processing
- ⊕ Irrigation: Crop
- Irrigation: Non Crop
- ⬠ Water Use: Special Categories
- ⬠ MPCA Permitted Sites
- ⬠ Drinking Water Source Protection Areas
- ⬠ Wellhead Protection Areas
- ⬠ Dams
- ⬠ Active Gravel Pits
- ⬠ Water Access Sites
- Feedlots (by primary animal)**
  - BIRDS
  - BOVINES
  - HORSES
  - PIGS
- ⬠ Wetlands (from NWI)
- ⬠ Wild Rice
- ⬠ Zebra Mussels
- ⬠ Eurasian W. Milfoil, Faucet Snail, Zebra Mussels
- ⬠ Lakes
- ⬠ Zebra Mussels (Miss R.)
- ⬠ Faucel Snail (Miss R.)
- ⬠ Mississippi River
- ⬠ Trout Streams
- ⬠ Streams
- ⬠ River Stretches (AUIDs) w/ Water Quality Data
- ⬠ River Stretches (AUIDs) w/out Water Quality Data
- ⬠ Outlet - Major Watershed
- ⬠ Outlet - Catchment
- ⬠ Catchments (DNR Level 8)
- ⬠ Major Watersheds
- ⬠ Conservation Easements
- ⬠ Public Lands
- ⬠ Cities / Townships
- ⬠ County Boundaries
- ⬠ Roads
- ⬠ Proposed Mississippi River Trail (MRT) Route
- ⬠ Taconite State Trail
- ⬠ Paul Bunyan State Trail
- ⬠ Heartland State Trail
- ⬠ State Park Boundaries
- ⬠ State Recreation Area Boundaries
- ⬠ Scientific and Natural Areas
- ⬠ Wildlife Management Areas
- ⬠ Mississippi Headwaters Board (MHB) - Corridor